

---

▶ **Primare D30.2 Compact Disc Player User Guide**

---

## COPYRIGHT AND ACKNOWLEDGMENTS

Copyright © 2000 Primare Systems AB. All rights reserved.

Primare Systems AB  
Idavägen 17D  
SE-352 46 Växjö  
Sweden

The information in this guide is believed to be correct as of the date of publication. However, our policy is one of continuous development and so the information is subject to change without notice, and does not represent a commitment on the part of Primare Systems AB.

Primare is a trademark of Primare Systems AB. All rights reserved. All other product names are trademarks or registered trademarks of their respective owners.

### **Class 1 Laser Product**

The compact disc player is classified as a CLASS 1 LASER product. Use of control adjustments or Performance of procedures other than those specified herein may result in hazardous radiation.

CAUTION – INVISIBLE LASER RADIATION WHEN OPEN AND INTERLOCK DEFEATED. AVOID EXPOSURE TO BEAM.

**FCC Warning:** This equipment generates and can radiate radio frequency energy and if not installed and used correctly in accordance with our instructions may cause interference to radio communications or radio and television reception. It has been type-tested and complies with the limits set out in Subpart J, Part 15 of FCC rules for a Class B computing device. These limits are intended to provide reasonable protection against such interference in home installations.

**EEC:** This product has been designed and type-tested to comply with the limits set out in EN55013 and EN55020.

This guide was produced by Human-Computer Interface Ltd,  
<http://www.interface.co.uk>

# ► Contents

---

## Introduction

WELCOME TO THE D30.2 COMPACT DISC PLAYER.....	①
USING THE D30.2 WITH OTHER PRIMARE PRODUCTS .....	②
TECHNICAL SPECIFICATION .....	②

## Using the D30.2 Compact Disc Player

FRONT PANEL CONTROLS .....	③
FRONT PANEL DISPLAY .....	④
SWITCHING ON AND OFF .....	④
PLAYING A DISC .....	⑤
LOCATING A POSITION ON THE DISC .....	⑤

## Advanced use

CHANGING THE FRONT PANEL DISPLAY .....	⑦
REPEATING PLAYBACK.....	⑦
PROGRAMMING A SELECTION OF TRACKS	⑧

## Connecting the D30.2 Compact Disc Player

BACK PANEL CONNECTIONS.....	⑪
POWER CONNECTION.....	⑫
ANALOGUE OUTPUTS.....	⑫
DIGITAL OUTPUT.....	⑫

## Index



# ► Introduction

**Welcome to the Primare D30.2 Compact Disc Player! This chapter introduces you to its key features, and explains how you can use it to achieve superb sound from your CD collection.**

## WELCOME TO THE D30.2 COMPACT DISC PLAYER

Every component of the D30.2, from the CD transport to the audio output stage, has been designed to achieve the highest possible audio performance.

### **Top of the range Sony transport mechanism**

The Primare D30.2 Compact Disc Player uses an advanced Sony transport mechanism. A precision crystal clock oscillator is used to ensure low jitter, for excellent audio performance.

### **Precision digital to analogue conversion**

Digital to analogue conversion is performed by four Burr-Brown PCM1704 D/A converters. The analogue signal path is fully balanced in order to retain the accuracy of the digital signal, and make the signal highly resistant to interference. The D30.2 also provides a gold plated S/PDIF output for direct connection to a digital system.

### **No compromise power supply for the highest possible performance**

The Primare D30.2 Compact Disc Player uses separate isolated power supplies for the digital and analogue circuits, for maximum isolation. The result is an extremely high signal to noise ratio, allowing you to take full advantage of the dynamic range possible with CD.

### **Careful design for mechanical stability**

The Primare D30.2 is designed to ensure very low mechanical noise and electromagnetic interference for extremely accurate tracking of the disc. This ensures that the digital signal is free from errors so it is converted into an audio signal as close to the original as the basic principle allows. The front panel design isolates the display circuitry from the audio circuitry to avoid interference.

### **Intuitive user interface**

In keeping with the philosophy of the Primare range of systems, the D30.2 can be controlled through a very simple and intuitive interface, designed so that it will not distract you from the pleasure of listening to music on your system.

In fact most of the features of the D30.2 can be accessed through just seven front panel push buttons. The full set of functions, including scan and programming, is available using the remote control supplied with the D30.2.

Alternatively, all the functions of the D30.2 can be controlled by the optional C30 Remote Control, along with the other Primare components in your system.

## USING THE D30.2 WITH OTHER PRIMARE PRODUCTS

Although the D30.2 Compact Disc Player is flexible enough to work with virtually any other equipment you have in your system, it is ideally suited for use with the balanced inputs of the A30.1 Integrated Amplifier. A particular benefit of using the D30.2 with a Primare preamplifier is that you can control your entire system with a single remote control, to give you a fully integrated system with the simplest possible user interface.

## TECHNICAL SPECIFICATION

<b>Mechanism</b>	Sony
<b>D/A Converter</b>	Burr-Brown PCM1704 24-bit 8 x oversampling 96kHz
<b>Filter</b>	Burr-Brown DF1704 24-bit 8 x oversampling 96kHz
<b>Output RCA</b>	2.2V
<b>Output XLR</b>	4.4V
<b>Output Impedance</b>	100Ω
<b>Frequency Response</b>	20Hz – 20kHz (+0/-0.2dB)
<b>Signal to Noise Ratio</b>	100dB A-weighted
<b>THD and noise</b>	0.01% (20Hz – 20kHz)
<b>Digital Output</b>	75Ω coaxial
<b>Standby</b>	<7.5W (fixed power <13.5W)
<b>Play</b>	<23.5W
<b>Dimensions</b>	430 x 385 x 100mm
<b>Weight</b>	11kg

# ► Using the D30.2 Compact Disc Player

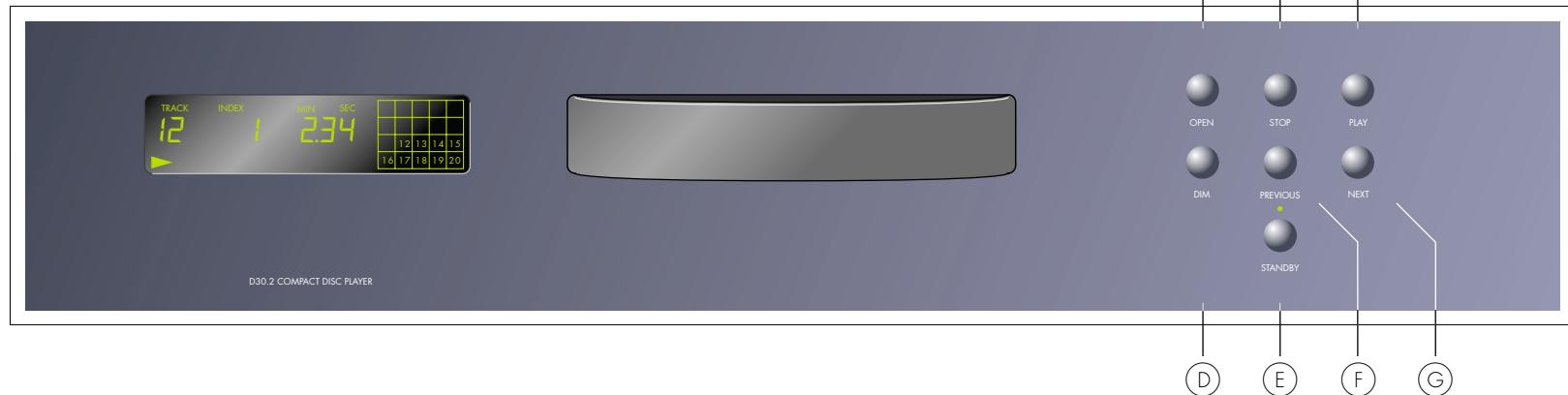
**This chapter explains how to operate the D30.2 Compact Disc Player, using either the front panel controls or the remote control.**

## FRONT PANEL CONTROLS

The main functions of the D30.2 Compact Disc Player can be accessed using the six front panel push buttons, and information about its operation is displayed on the front panel display:

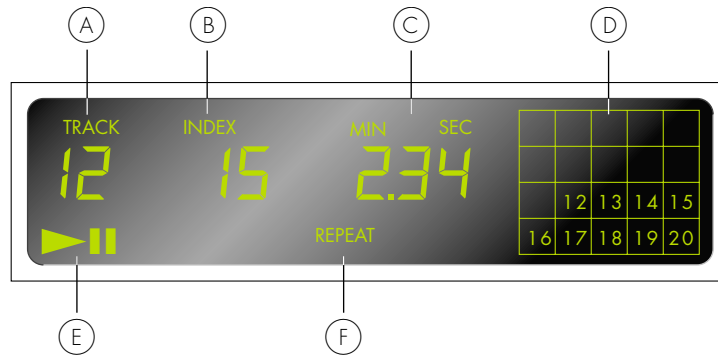
- (A) The **OPEN** button opens or closes the disc tray.
- (B) The **STOP** button stops play.
- (C) The **PLAY** button plays or pauses the disc.
- (D) The **DIM** button blanks or restores the front panel display.

- (E) The **STANDBY** button switches the D30.2 to standby, or brings it out of standby.
- (F) The **PREVIOUS** button restarts the current track, or steps to the previous track.
- (G) The **NEXT** button steps to the next track.



## FRONT PANEL DISPLAY

The following illustration shows the information on the front panel display:



- (A) Current track.
- (B) Current index number.
- (C) Current track time.
- (D) Track list.
- (E) Play/pause mode.
- (F) Repeat mode.

### To dim the front panel display

- Press the **DIM** button on the front panel or remote control.

The display will blank.

### To restore the front panel display

- Press the **DIM** button again on the front panel or remote control.

The display will also be restored briefly if you give any command.

## SWITCHING ON AND OFF

### To switch on

- Use the switch under the left-hand edge of the front panel.

During normal operation you can leave the D30.2 switched on and in standby.

### To switch to standby

- Press the **STANDBY** button on the front panel or the **STBY** button on the remote control.

### To switch on from standby

- Press the **STANDBY** button on the front panel, or any command on the remote control.

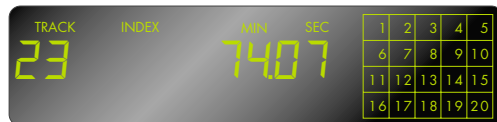


## PLAYING A DISC

**To insert a disc**

- Press the **OPEN** button on the front panel or remote control to open the tray.
- Place the CD in the tray with the label uppermost.
- Press the **OPEN** button on the front panel or remote control to close the tray, or gently push the front of the tray.

The front panel display briefly shows the total number of tracks on the disc, and the total duration of the disc.



For example:

**To play a disc**

- Press the **PLAY** button on the front panel or remote control.

While a disc is playing the front panel display shows the current track number, the current index number, and the time of the current track.



For example:

**Note:** If the disc does not include index points, the index number will be shown as 1.

**To stop play**

- Press the **STOP** button on the front panel or remote control.

**To pause play**

- Press the **PLAY** button on the front panel or remote control

The pause indicator will be shown on the front panel display:



You can then resume play by pressing the **PLAY** button again.

## LOCATING A POSITION ON THE DISC

You can step between tracks to locate a particular track on the disc, or you can scan forwards or backwards to locate a position within a track.

**To step between tracks**

- Press the **PREVIOUS** or **NEXT** buttons on the front panel, or the ◀ or ▶ buttons on the remote control.

You can hold down the button to step quickly between tracks.

The front panel display shows the number of the track as you step:



When you release the button the current track starts playing from the beginning.

If you step between tracks on a CD while the disc is paused it will wait for you to press the **PLAY** button on the front panel or remote control before playing from the track you have selected.

### To scan through the disc

- Hold down the ◀◀ or ▶▶ button on the remote control

As you scan, the front panel display shows the current track and position within the track. If the disc includes index points the display also shows the current index number.

- Release the button to start playing from the position you have located.

# ► Advanced use

**This chapter explains how to use the more advanced features of the D30.2 Compact Disc Player which you can access from the remote control.**

## CHANGING THE FRONT PANEL DISPLAY

You can change the front panel time display to show elapsed time for the current track, remaining time for the current track, or remaining time for the entire disc.

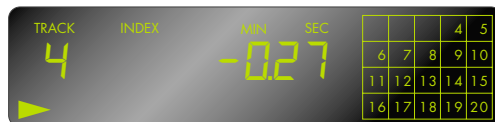
### To change the time display

- Press the **TIME** button on the remote control.

The display switches between the following three options:



Elapsed time for the current track.



Remaining time for the current track.



Remaining time for the entire disc.

## REPEATING PLAYBACK

You can choose to repeatedly play back the current track of the CD, or the entire CD. You can also repeatedly play back a section of a CD between two specified positions.

### To repeat the entire disc

- Press the **REPEAT** button on the remote control.

The front panel display shows **REPEAT**:



### To repeat the current track

- Press the **REPEAT** button twice on the remote control.

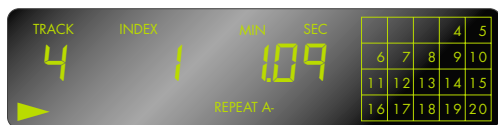
The front panel display shows **REPEAT1**:



### To repeat a specific section of a disc

- Press the **A/B** button on the remote control at the start of the section you want to repeat.

The front panel display shows **REPEAT A-**:



- Press the A/B button again at the end of the section you want to repeat.

The front panel display shows **REPEAT A-B**:



The compact disc player will then automatically return to the start of the section you have marked and play back repeatedly.

### To turn off repeat

- Press the **REPEAT** button again.

The **REPEAT** symbol in the front panel display will be cleared.

## PROGRAMMING A SELECTION OF TRACKS

The D30.2 Compact Disc Player allows you to program a selection of tracks on the current disc. You can then play just the tracks you have selected.

### To program a selection of tracks

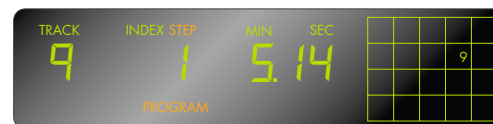
- Press the **MEM** button on the remote control while the disc is stopped.

The front panel display shows **PROGRAM**.

- Use the **◀** and **▶** buttons on the remote control to select the first track you want to program.

As you step between tracks the front panel display shows the number of the track you are programming, the number of the step in the program, and the duration of the track.

The track number also flashes in the track list on the right-hand side of the display:



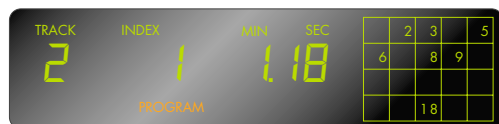
- Press the **MEM** button on the remote control to program the currently selected track.
- Repeat for any other tracks you want to program.
- Press the **MEM** key to exit from programming mode.

The front panel display shows **CONTINUE**, and then reverts to the normal track time display.

### To play the selection you have programmed

- Press the **MEM** button on the remote control while the disc is playing.

The front panel display shows **PROGRAM**, and the track list shows the tracks you have programmed:



### To revert to playing the entire disc

- Press the **MEM** button on the remote control.

The front panel display shows **CONTINUE**, and the compact disc player reverts to normal playing mode.

► Advanced use

---

# ► Connecting the D30.2 Compact Disc Player

**This chapter explains how to connect the D30.2 to the other components in your system, using the connections on the back panel.**

## BACK PANEL CONNECTIONS



(A) Right XLR balanced output.

(B) Analogue audio output.

(C) Left XLR balanced output.

(D) Digital S/PDIF output.

(E) Fixed power switch

(F) Mains power input.

## POWER CONNECTION

**Warning:** Before connecting power check that the required supply voltage, indicated on the back panel, corresponds to your local AC supply. If a different voltage is stated on the type plate do not connect the compact disc player to the mains power, and seek advice from your dealer.

Connect the mains power using the enclosed mains cable.

**Note:** Always disconnect the compact disc player from the mains power before connecting or disconnecting any of the cables.

## ANALOGUE OUTPUTS

The D30.2 provides two alternative analogue outputs.

### Balanced outputs

If you are using a preamplifier that provides balanced inputs, such as the Primare A30.1 Integrated Amplifier, you can achieve the best results by connecting the balanced outputs from the D30.2 using balanced XLR cables.

### Phono output

The D30.2 also provides stereo phono sockets for connection to a conventional stereo preamplifier.

### Fixed power switch

The D30.2 Compact Disc Player includes an option to keep power supplied to the analogue circuitry, even when it is in standby, for the best sound. If you are using the analogue outputs it is recommended that you choose this option by switching the FIXED POWER switch to the left.

## DIGITAL OUTPUT

The D30.2 Compact Disc Player provides an S/PDIF digital output for connection to a digital preamplifier or digital surround processor, such as the Primare P30 Processor.



# ► Index

---

## A

analogue outputs .....	12
balanced XLR .....	12
phono .....	12

## B

back panel connections .....	11
balanced XLR outputs .....	12

## C

connections .....	11
-------------------	----

## D

digital output .....	12
DIM button .....	3

## F

fixed power switch .....	11, 12
front panel controls .....	3
front panel display .....	4
changing .....	7
dimming .....	4

## I

inserting a disc .....	5
introduction .....	1

## N

NEXT button .....	3
-------------------	---

## O

OPEN button .....	3
outputs .....	12
balanced XLR .....	12
digital .....	12
phono .....	12

## P

pausing play .....	5
phono output .....	12
PLAY button .....	3
playing a disc .....	5
power, connecting .....	12
PREVIOUS button .....	3
programming a selection of tracks .....	8

## R

repeating .....	7
a specific section of a disc .....	8
the current track .....	7
the entire disc .....	7
turning off .....	8

## S

scanning through the disc .....	6
specification .....	2

standby	
switching on from .....	4
switching to .....	4
STANDBY button .....	3
stepping between tracks .....	5
STOP button .....	3
stopping play .....	5
switching on and off .....	4
switching on from standby .....	4
switching to standby .....	4

## T

tracks	
playing your programmed selection .....	9
programming a selection .....	8
stepping between .....	5

## U

using with other Primare products .....	2
---	---